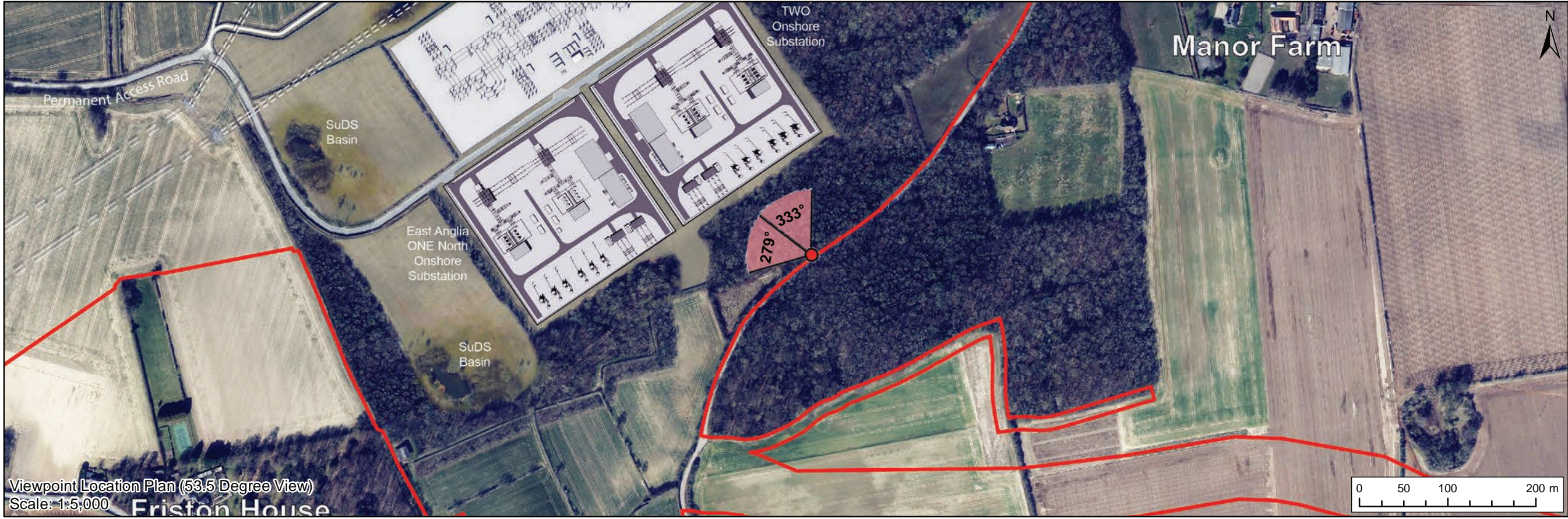


Viewpoint Location Plan Baseline Panorama (90 Degree View)
Scale: 1:20,000



Viewpoint Location Plan (53.5 Degree View)
Scale: 1:5,000

Legend

- Proposed Onshore Development Area
- Indicative East Anglia TWO Substation Location
- Indicative East Anglia ONE North Substation Location
- Indicative National Grid AIS Substation Location

Viewpoint:

- 90 Degree Field of View Viewpoint
- 53.5 Degree Field of View Viewpoint



Baseline Photograph (90 Degree Field of View)



5	29/08/2019	LA	Fifth Issue (OPEN)			
4	15/08/2019	LA	Fourth Issue (OPEN)	Prepared:	LA	Scale @ A3
3	25/07/2019	LA	Third Issue (OPEN)	Checked:	SM	
Rev	Date	By	Comment	Approved:	LT	

Source: © Crown copyright and database rights 2019. Ordnance Survey 100031872.
This map has been produced to the best known information at the time of issue, and has been produced for your information only.
Please consult with the SPR Onshore GIS team to ensure the content is still current before using the information contained on this map.
To the fullest extent permitted by law, we accept no responsibility or liability, whether in contract, tort (including negligence) or otherwise in respect of any errors or omissions in the information contained in the map and shall not be liable for any loss, damage or expense caused by such errors or omissions.

East Anglia TWO with
National Grid AIS Substation

Viewpoint 14: Grove Road

Drg No	EA2-DWF-ENV-REP-IBR-000921	
Rev	5	Coordinate System: BNG
Date	29/08/19	Datum: OSGB36
Figure	29.26a	



Baseline Photograph (90 Degree Field of View)



5	29/08/2019	LA	Fifth Issue (OPEN)		
4	15/08/2019	LA	Fourth Issue (OPEN)	Prepared:	LA
3	25/07/2019	LA	Third Issue (OPEN)	Checked:	SM
Rev	Date	By	Comment	Approved:	LT

Source: © Crown copyright and database rights 2019. Ordnance Survey 010001872.
This map has been produced to the best known information at the time of issue, and has been produced for your information only.
Please consult with the SPP Onshore GIS team to ensure the content is still current before using the information contained on this map.
To the fullest extent permitted by law, we accept no responsibility or liability (whether in contract, tort (including negligence) or otherwise) in respect of any errors or omissions in the information contained in the map and shall not be liable for any loss, damage or expense caused by such errors or omissions.

Scale @ A3

**East Anglia TWO with
National Grid AIS Substation**

Viewpoint 14: Grove Road

Drg No	EA2-DWF-ENV-REP-IBR-000921	
Rev	5	Coordinate System: BNG Datum: OSGB36
Date	29/08/19	
Figure	29.26a	



Visual representation of 1st year of operational phase
Photomontage of the proposed East Anglia TWO and National Grid AIS Substation

View flat at a comfortable arm's length

OS reference:	641619 E 261025 N	Horizontal field of view:	53.5° (planar projection)	Camera:	Canon EOS 5D Mark II
Eye level:	22 m AOD	Principal viewing distance:	812.5 mm	Lens:	50mm (Canon EF 50mm f/1.4)
Direction of view:	279.4°	Paper size:	841 x 297 mm (half A1)	Camera height:	1.5 m AGL
		Correct printed image size:	820 x 260 mm	Date and time:	08/04/2019, 13:12:05

Contains Ordnance Survey digital data © Crown copyright, All rights reserved 2019 Licence number 0100031673

Figure: 29.26b
Viewpoint 14: Grove Road



Visual representation of 1st year of operational phase
Photomontage of the proposed East Anglia TWO and National Grid AIS Substation

View flat at a comfortable arm's length

OS reference:	641619 E 261025 N	Horizontal field of view:	53.5° (planar projection)	Camera:	Canon EOS 5D Mark II
Eye level:	22 m AOD	Principal viewing distance:	812.5 mm	Lens:	50mm (Canon EF 50mm f/1.4)
Direction of view:	332.9°	Paper size:	841 x 297 mm (half A1)	Camera height:	1.5 m AGL
		Correct printed image size:	820 x 260 mm	Date and time:	08/04/2019, 13:12:05

Contains Ordnance Survey digital data © Crown copyright, All rights reserved 2019 Licence number 0100031673

Figure: 29.26b
Viewpoint 14: Grove Road



Visual representation of 15th year of operational phase
Photomontage of the proposed East Anglia TWO and National Grid AIS Substation

View flat at a comfortable arm's length

OS reference:	641619 E 261025 N	Horizontal field of view:	53.5° (planar projection)	Camera:	Canon EOS 5D Mark II	<small>Contains Ordnance Survey digital data © Crown copyright, All rights reserved 2019 Licence number 0100031673</small>
Eye level:	22 m AOD	Principal viewing distance:	812.5 mm	Lens:	50mm (Canon EF 50mm f/1.4)	
Direction of view:	279.4°	Paper size:	841 x 297 mm (half A1)	Camera height:	1.5 m AGL	
		Correct printed image size:	820 x 260 mm	Date and time:	08/04/2019, 13:12:05	

Figure: 29.26c
Viewpoint 14: Grove Road



Visual representation of 15th year of operational phase
Photomontage of the proposed East Anglia TWO and National Grid AIS Substation

View flat at a comfortable arm's length

OS reference:	641619 E 261025 N	Horizontal field of view:	53.5° (planar projection)	Camera:	Canon EOS 5D Mark II
Eye level:	22 m AOD	Principal viewing distance:	812.5 mm	Lens:	50mm (Canon EF 50mm f/1.4)
Direction of view:	332.9°	Paper size:	841 x 297 mm (half A1)	Camera height:	1.5 m AGL
		Correct printed image size:	820 x 260 mm	Date and time:	08/04/2019, 13:12:05

Contains Ordnance Survey digital data © Crown copyright, All rights reserved 2019 Licence number 0100031673

Figure: 29.26c
Viewpoint 14: Grove Road







Visual representation of 15th year of operational phase
Photomontage of the proposed East Anglia TWO, East Anglia ONE North and National Grid AIS Substation

View flat at a comfortable arm's length

OS reference:	641619 E 261025 N	Horizontal field of view:	53.5° (planar projection)	Camera:	Canon EOS 5D Mark II
Eye level:	22 m AOD	Principal viewing distance:	812.5 mm	Lens:	50mm (Canon EF 50mm f/1.4)
Direction of view:	279.4°	Paper size:	841 x 297 mm (half A1)	Camera height:	1.5 m AGL
		Correct printed image size:	820 x 260 mm	Date and time:	08/04/2019, 13:12:05

Contains Ordnance Survey digital data © Crown copyright, All rights reserved 2019 Licence number 0100031673

Figure: 29.26e
Viewpoint 14: Grove Road



Visual representation of 15th year of operational phase
Photomontage of the proposed East Anglia TWO, East Anglia ONE North and National Grid AIS Substation

View flat at a comfortable arm's length

OS reference:	641619 E 261025 N	Horizontal field of view:	53.5° (planar projection)	Camera:	Canon EOS 5D Mark II
Eye level:	22 m AOD	Principal viewing distance:	812.5 mm	Lens:	50mm (Canon EF 50mm f/1.4)
Direction of view:	332.9°	Paper size:	841 x 297 mm (half A1)	Camera height:	1.5 m AGL
		Correct printed image size:	820 x 260 mm	Date and time:	08/04/2019, 13:12:05

Contains Ordnance Survey digital data © Crown copyright, All rights reserved 2019 Licence number 0100031673

Figure: 29.26e
Viewpoint 14: Grove Road